

# Cepex

# Data port receptacles.



The rugged  
receptacles  
for harsh  
environments.

Cepex data port receptacles.

# Rugged enclosure.

- Operates with commercial patch cables
- Clearly visible labelling field
- Suitable for double RJ 45 ports, cat. 3 to cat. 6
- Gymnasium type to DIN 18032
- Back Box can be rotated by 180°, thus cable insertion is possible from top or bottom without additional work
- Further cable entries: 2 x M25 at the side and 1 x M20 from the rear (can be cut out)
- Same design as Cepex CEE- and / or SCHUKO® receptacles

Type of protection IP 43 with closed cover, plugged or unplugged.



Surface mounted. Flush mounted.  
In cable ducts.

 **MENNEKES®**  
Plugs for the world

# The versatile concept.

**Applications:**  
Control stations,  
storage areas  
and production  
lines in industry,  
schools /  
universities,  
laboratories,  
airports, etc.

**Lockable - even when the cables are plugged in.**

The safety lock protects against unauthorized access. Identical locks are possible.

**Membrane cable gland**

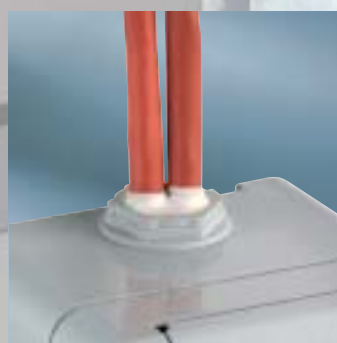
As a standard, all versions are fitted with a membrane cable gland M25 for two cables of 3 - 9 mm. Simply pierce the membrane with the cable - that's all it takes.

**Cable gland**

For special requirements, a metric cable gland M25 / 2 x 8 is available as an option.

**Connection space.**

Generously dimensioned wiring space for swift and easy installation. The ergonomic design protects the installed components.



# Cepex Data port receptacles

### Cepex enclosure

as a surface mounted receptacle,  
for RJ 45 ports, 2 keys,  
grey RAL 7035, IP 43

For **TKM** data insert **Ref. no. 4300**

For **Rutenbeck** data insert **Ref. no. 4320**

Lock for common key: Ref. no. + index "G"



### Flush mounted back box

suitable for Cepex panel mounted  
receptacles  
(= flush mounted receptacle)

**Ref. no. 41404**



### Cepex enclosure

as a panel mounted receptacle,  
for RJ 45 ports, 2 keys,  
grey RAL 7035, IP 43

For **TKM** data insert **Ref. no. 4302**

For **Rutenbeck** data insert **Ref. no. 4322**

Lock for common key: Ref. no. + index "G"

**Flush mounted back box** Ref. no. 41404



### Spacer frame

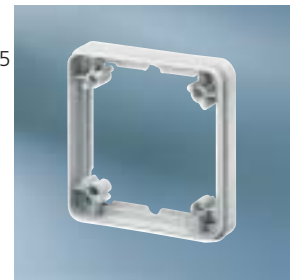
as a height equalizer, matching all surface  
mounted Cepex receptacles, grey RAL 7035

**Ref. no. 4191**

### Spacer frame

as a height equalizer, matching all surface  
mounted Cepex receptacles,  
snow-white RAL 9010

**Ref. no. 4239**



### Cepex enclosure

as a panel mounted receptacle,  
for RJ 45 ports, 2 keys,  
snow-white RAL 9010, IP 43

For **TKM** data insert **Ref. no. 4304**

For **Rutenbeck** data insert **Ref. no. 4324**

Lock for common key: Ref. no. + index "G"

**Flush mounted back box** Ref. no. 41404



### Cable gland

M25 / 2 x 8, for 2 cables 3-8 mm,  
matching all Cepex surface mounted  
receptacles, grey RAL 7035

**Ref. no. 41453**



### Rutenbeck

data port receptacle,  
2 x RJ 45, cat. 6  
(type UPOS)

**Ref. no. 41451**



### Cepex masking frames

matching all Cepex flush mounted and  
panel mounted receptacles,

single,  
grey RAL 7035

**Ref. no. 41407**

double,  
grey RAL 7035  
**Ref. no. 41409**

single,  
snow-white  
RAL 9010

**Ref. no. 41423**

double, snow-  
white RAL 9010  
**Ref. no. 41424**



### TKM

data port receptacle,  
2 x RJ 45, cat. 6,  
(type KDMF)

**Ref. no. 41452**



### Accessories for cable duct installation, made by Tehalit

Installation box, Tehalit Ref. no. L 5819  
plus  
blind 100 mm channel height,  
single, Tehalit Ref. no. L9120  
or  
blind 120 mm channel height,  
single, Tehalit Ref. no. L 9170

Cepex recep-  
tacles are also  
available as  
**SCHUKO®** or  
CEE version.